



Q8 Barcode Label Printer

User's Manual

FCC Notice

This device complies with Part 15 of the FCC Rules. Operation is subject to the following two conditions: (1) this device may not cause harmful interference, and (2) this device must accept any interference received, including interference that may cause undesired operation.

This equipment may generate, use and/or radiate radio frequency energy. If not installed and used in full accordance with this User's Manual, interference to radio communications may occur. This equipment complies with the limits for a Class A Information Technology Equipment pursuant to Part 15 of the FCC Rules, which are designed to provide reasonable protection against such interference when operated in a commercial environment. Operation of this equipment in a residential area may also cause interference. In such case the user, at his/her expense, will be required to correct the interference using whatever means necessary.

Trademarks

EC Printer is a registered trademark by EC Electronics Limited.
Microsoft, Windows are registered trademarks by Microsoft Corporation.

Copyright

© 2015 by EC Electronics Limited. All rights reserved. Under the copyright laws, this manual cannot be reproduced in any form without the prior written permission of EC Printer. No patent liability is assumed with respect to the use of the information contained herein.

EC Printer Q8 Barcode Label Printer User's Manual
2nd edition Mar. 2015

Disclaimer

This manual has been validated and reviewed for accuracy. The instructions and descriptions it contains are accurate for the EC Printer Q8 Label Printer at the time of this manual's printing. However, succeeding printers and manuals are subject to change without notice. EC Printer assumes no liability for damages incurred directly or indirectly from errors, omissions or discrepancies between the printer and this manual.

Although this manual describes and details many issues, which could possibly occur, the manufacturer cannot warrant against unpredictable conditions during the printing process. For problems such as the printer not working, lost or unclear print content, etc., the manufacturer and resellers are responsible for correcting these issues (according to EC Printer Printer Warranty Clauses). In no event shall the manufacturer or the resellers involved be liable for any damages whatsoever including without limitation; damages for loss of business profits, business interruption, loss of business information, or other pecuniary loss arising from the use of this product.

Important Safety Instructions

- ◆ Only qualified and trained authorized EC PRINTER service providers should attempt to disassemble or repair the printer. Incorrect disassembling of the product or its power adaptor may cause an electronic short, human injury or printer component damages.
- ◆ Do not use a worn or damaged power cord as it could result in electric shock and personal injury. If the power cord becomes damaged or frayed, replace it immediately.
- ◆ Be sure that the output of the power adapter is 24VDC and your power source matches the rating listed on the power adapter. Ensure the power source is grounded.
- ◆ Do not insert anything into the ventilation slots or openings on the printer.
- ◆ The printer and power adapter should never be operated in a location where either one can get wet. Personal injury may result.
- ◆ The Printhead becomes hot while printing. To protect from damaging the Printhead and risk of personal injury, avoid touching it.
- ◆ To obtain increased Printhead longevity and higher quality output, always use quality labels, tags and thermal transfer ribbons. Check for quality supplies with a EC PRINTER reseller.
- ◆ Static electricity that accumulates on the surface of the human body or other surfaces can damage or destroy the Printhead or electronic components in this device. DO NOT touch the Printhead or the electronic components with bare hands.
- ◆ Place the printer on a flat, firm, solid surface.

Warnings:

This is a Class A product. In a domestic environment this product may cause radio interference in which case the user may be required to take adequate measures (see FCC Notice).

Static electricity that accumulates on the surface of the human body or other objects can damage the print head or electronic components in the V6 printer. Observe proper electrostatic safety precautions when handling.

- ◆ Power off the printer when not in use for extended periods of time.
- ◆ Never operate in a high temperature environment.
- ◆ Follow all recommendations and setup instructions included in this manual.

Contents

Preface.....	1
Important Notice, Read Me First!.....	1
Chapter 1 Introduction	2
Specifications	2
Specifications for Printer	2
Specifications for Power Adapter.....	3
Contents of Box	3
Packing List	3
Chapter 2 Setup and Use.....	5
Setting up	5
Main Parts and Structures	5
Connecting the Printer	8
Interface Connection	8
Loading the Ribbon.....	9
Loading the Media	13
Standard Mode	13
Cutting Mode	17
Adjusting the Position of Media Sensor.....	18
Chapter 3: Operations and Settings.....	22
Basic Operations	22
Power Switch	22
The Front Panel.....	22
Indicator Lamps	22
Advanced Operations	23
DIP Switch Panel	25
Windows Driver and Bartender-Postek Software	26
Chapter 4: Maintenance.....	27
Cleaning the Printhead	27
Cleaning the Platen Roller	28
Cleaning the Printer Interior	28
Chapter 5: Troubleshooting	29
Error Indicators	29
Miscellaneous	31
Appendix A: IO Interface Specifications.....	33
Appendix B: ASCII Table	35

Preface

Your EC PRINTER Q8 barcode label printer provides many outstanding features to enjoy. The EC PRINTER Q8 is compact, versatile, and easy to use. It supports both direct thermal and thermal transfer printing methods, and employs an unparalleled print engine that reduces noise and enhances durability.

This manual explains how to set up and begin using your EC PRINTER Q8 printer. It also provides detailed information on configuring your Q8 printer, basic operations, maintenance and troubleshooting.

Please read this manual carefully and completely before using the EC PRINTER Q8 printer.

Important Notice, Read Me First!

A thermal Printhead can be easily damaged due to its precision construction. A Printhead damaged due to misuse is not covered under the terms of the warranty. To ensure longevity of the Printhead, please note the following:

- ◆ DO NOT scrape, or use tools that might damage the Printhead surface.
- ◆ To protect from corroding the Printhead, DO NOT touch the Printhead with bare hands.
- ◆ DO NOT use thermal paper or thermal transfer ribbon, which contains Na, K or Cl.
- ◆ Keep Printhead away from any liquid or dampness.
- ◆ Use a cotton swab dipped in anhydrous isopropyl alcohol to clean the Printhead only.
- ◆ Always use high-quality consumables:
 - When the Printhead module is closed, pressure is placed directly onto the Printhead; dirt such as paper scraps, sand, dust and glue can scrape or damage the Printhead.
 - The Printhead is also easily damaged by static electricity, which may be generated by poor quality ribbons. Always inspect consumables for quality before purchasing.

Chapter 1 Introduction

Specifications

Specifications for Printer

Mode	Q8/200	Q8/300
Printing method	Direct Thermal & Thermal transfer	
Printing resolution	203 dpi (8 dots/mm)	300 dpi (11.8 dots/mm)
Max printing speed	4 ips (101.6 mm/s)	3 ips (76.2 mm/s)
Max printing width	4.25"(108 mm)	4.17"(106 mm)
Max printing length	157" (4000 mm)	79" (2000 mm)
Memory	8 MB FLASH ROM, 16 MB SDRAM	
Media	Roll-feed, die-cut, continuous, tags, tickets in plain paper or thermal paper Width: 4.72" (120 mm) max., 0.98" (25 mm) min. Supply roll: OD4.49" (114 mm) max., ID 1" (25.4 mm) min. Thickness: 0.003"~0.006" (0.08~0.15 mm), including liner	
Ribbon	Wax, Wax/Resin, Resin Ribbon roll: OD 1.5" (38 mm) max., ID 0.5" (12.7 mm) core Max width: 4.3" (110 mm); Max length: 360' (110 M)	
Fonts	Five built-in ASCII fonts; Downloadable Soft Fonts	
Bar Code Types	1D Barcode : Code 39, Code 93, Code 128/subset A,B,C, Codabar, Interleave 2 of 5, UPC A/E 2 and 5 add-on, EAN-13/8/128, UCC-128, etc. 2D Barcode : MaxiCode, PDF417, Data matrix, etc.	
Media sensor	Reflective (multiple mounting positions)	
Interfaces	RS-232 Serial, USB 2.0	
Power rating	24 VDC Power adapter	

Weight	2.1 kgs
Dimensions	W 8.3" (210 mm) x D 10" (255 mm) x H 5.9" (150 mm)
Operation environment	Temperature: 32° F ~ +104° F (0° C ~ 40° C) Relative humidity: 5% - 85% non condensing
Storage environment	Temperature: -40° F ~ +140° F (-40° C ~ 60° C) Relative humidity: 5% - 85% non condensing
Optional items	Guillotine Cutter, Media Guide Adaptor

Specifications for Power Adapter

Input	AC 100 ~ 240 V, 47 ~ 63 Hz
Output	DC 24V, 2.5 A
Environment	32° F ~ 104° F (0° C ~ 40° C)

Contents of Box

Inspect the shipping carton(s) for possible shipping damage, if damage is discovered, notify the shipping company to report the nature and extent of the damage.

Please check the items according to the Packing List. If there are any items missing, notify your authorized reseller.

Packing List

1	Q8 Printer	1 pc
2	Quick Start Guide	1 pc
3	Power Adapter	1 pc
4	USB interface cable	1 pc
5	Media Spindle	1 pc
6	Media Roll Guides	2 pc
8	CD-ROM Pack	1 pc
10	Ribbon Core	1 pc

Note: CD-ROM pack includes the Q8 printer driver, Bartender-Postek software, Q8 User's Guide and the Programming Manual.

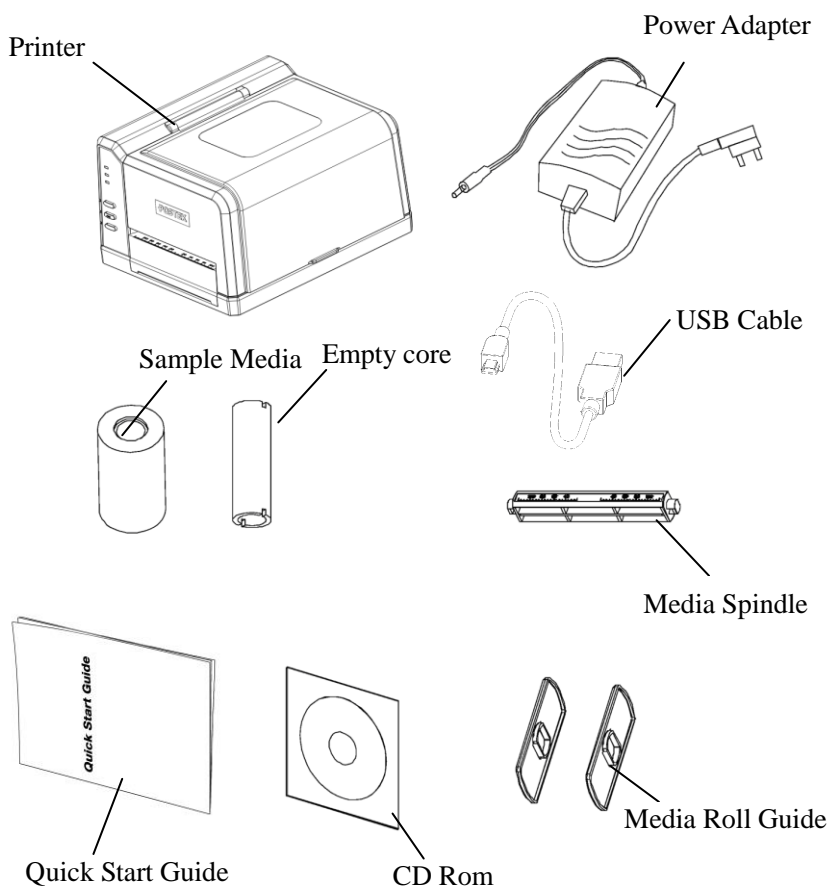


Figure 1: Printer and Accessories

Chapter 2 Setup and Use

Setting up

Before setting up the printer consider the following:

1. Make sure there is adequate space around the printer for loading consumables and proper ventilation.
2. Make sure the printer is close to the host so the interface cable is easily accessible at either end.

Main Parts and Structures

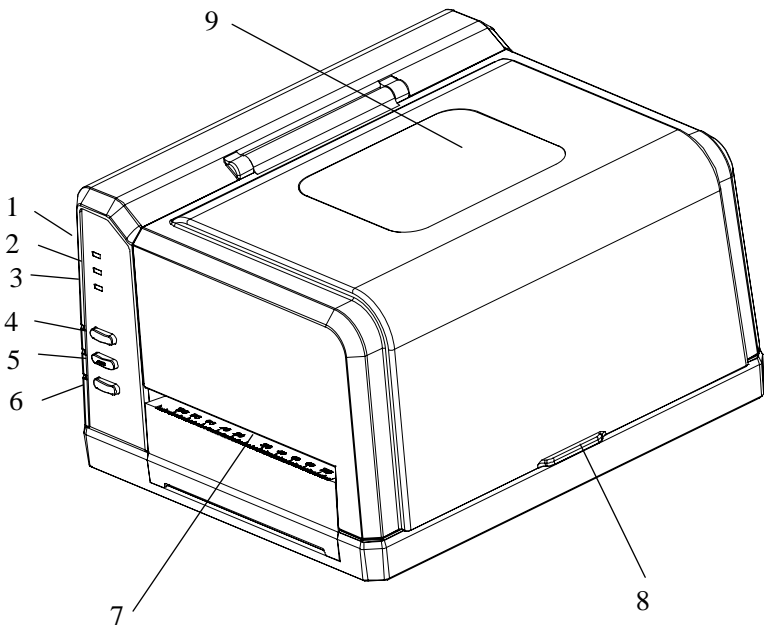


Figure 2

- | | | |
|---------------------|------------------|-----------------------|
| 1. READY Indicator | 4. PAUSE Button | 7. Media Exit |
| 2. MEDIA Indicator | 5. FEED Button | 8. Cover Handle |
| 3. RIBBON Indicator | 6. CANCEL Button | 9. Observation Window |

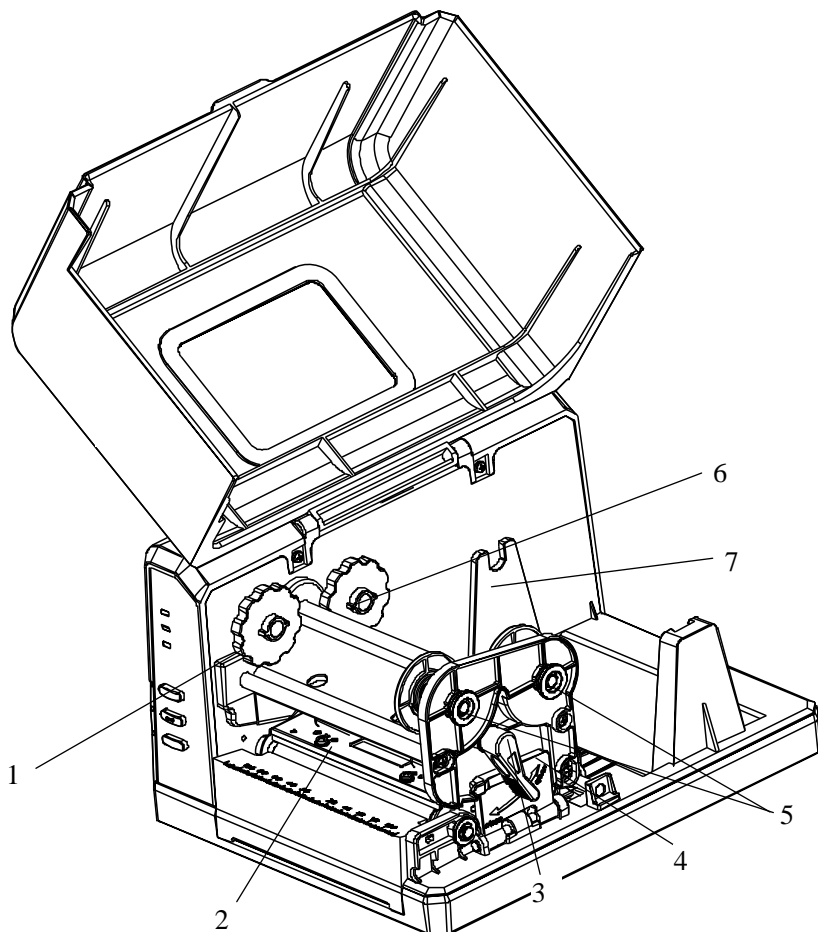


Figure 3

- | | | |
|----------------------|---------------------------|----------------------|
| 1. Ribbon Take-up | 4. Printhead Module Plate | 7. Media Compartment |
| 2. Printhead Bracket | 5. Ribbon Release Knobs | |
| 3. Handle | 6. Ribbon Supply | |

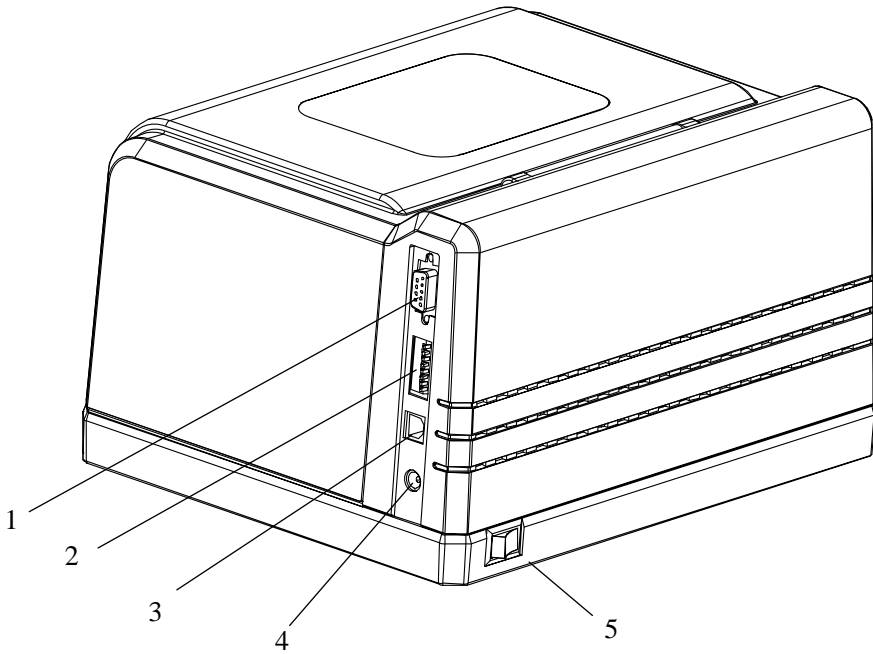


Figure 4

- | | |
|----------------------------|-----------------|
| 1. RS-232 Serial Interface | 4. Power Jack |
| 2. DIP Switches | 5. Power Switch |
| 3. USB Interface | |

Connecting the Printer

Warnings:

- (1) Using the wrong power adapter will cause damage to your printer. EC PRINTER assumes no liability for any damage in such cases. The rating for the printer is 24VDC.***
- (2) Do not operate the printer near heat sources, liquids or corrosive chemicals.***

1. Make sure the printer is powered OFF.
2. Connect the power cord to the power adapter.
3. Connect the power adapter's DC input plug to the power jack.
4. Plug the power cord into a live wall outlet.

Interface Connection

The Q8 supports USB and RS-232 Serial interface connections.

Note: When connecting the Q8 to a computer via the USB cable, make sure to utilize the same USB port used during the driver installation process, which enables the printer to retrieve needed commands or data from the PC. If the same USB port is not available or not known, then in the printer's Properties Dialogue Box, under the Ports tab, ensure the current port location is checked.

To connect:

1. Make sure the printer is powered OFF.
2. The printer will identify the communication port automatically.
3. The default values of printer port can be obtained from the self-test report. (See Chapter 2: Operation Basics/ Advanced Functions/ Self Test)
4. Cable configurations for interfaces are found in Appendix A of this guide.
5. Please take the following measures to reduce cable noise.
 - (1) Restrict the length of the interface cable to less than 6' (1.83 M) if possible.
 - (2) Keep the interface cable separate from power cords.

Loading the Ribbon

Note: Load ribbon only when using the thermal transfer printing method. Remove any ribbon that may be loaded when using the direct thermal printing method.

Warnings:

- (1) The Q8 supports ribbons with ink on the outside only. Check the ribbon package for ink side specifications.*
- (2) Always install a ribbon with the ink side facing outwards. The ink side of the ribbon must face the media and NOT the Printhead*
- (3) If using a ribbon less than 110 mm wide, place the ribbon roll in the middle of the Ribbon Spindle for proper alignment.*
- (4) Make sure the inner diameter of the ribbon is 0.5" (12.5 mm).*

To install the ribbon:

1. Open the right cover of the printer and turn the handle to the “open” position. Flip down the Printhead Module Plate (see Figure 5-1).
2. Remove the ribbon from its package, and place the roll into the Ribbon Supply area, pulling out the Ribbon Release Knob to insert the roll, and allow the leading edge of the ribbon to fall underneath the Printhead module. Ensure the ink side of the ribbon is facing down (see Figure 5-2).
3. Lead the ribbon below the Printhead module towards the front of the printer.
4. Attach the leading edge of the ribbon to an empty core. Mount the core onto the Ribbon Take-up using the Ribbon Loading Knob.
5. Turn the Ribbon Take-up Knob clockwise to ensure ribbon is tight and smooth (see Figure 5-3).
6. Close the buckle and turn the handle to the “close” position to lock the Printhead Module (see Figure 5-3).

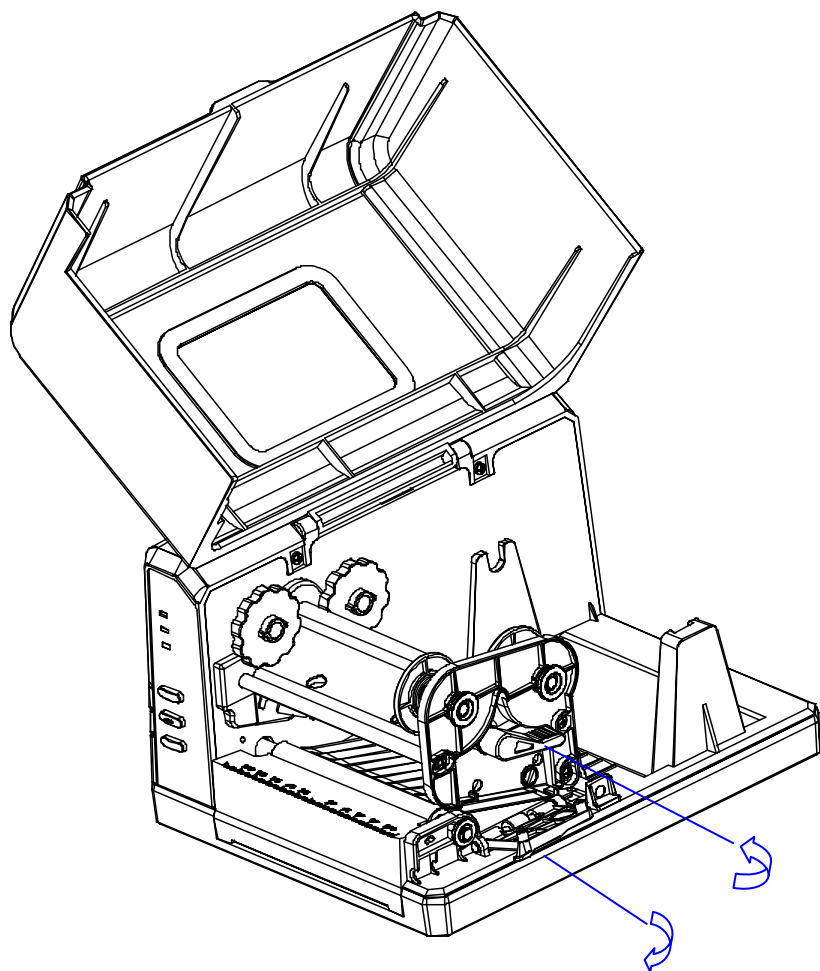


Figure 5-1

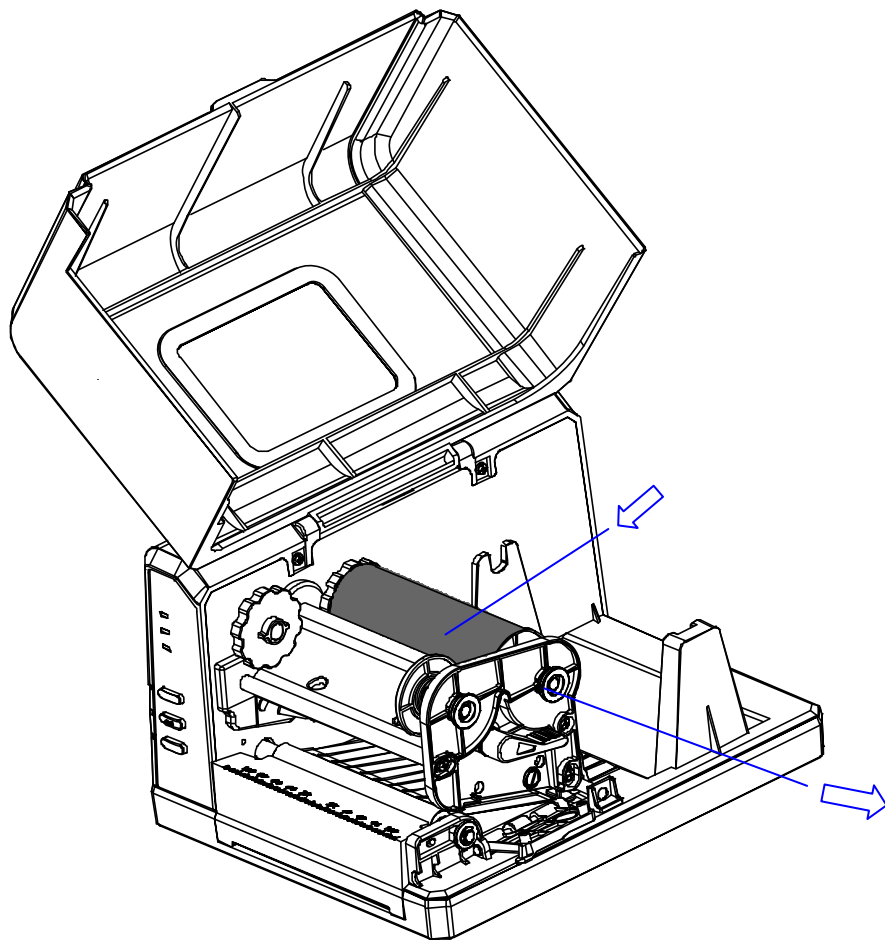


Figure 5-2

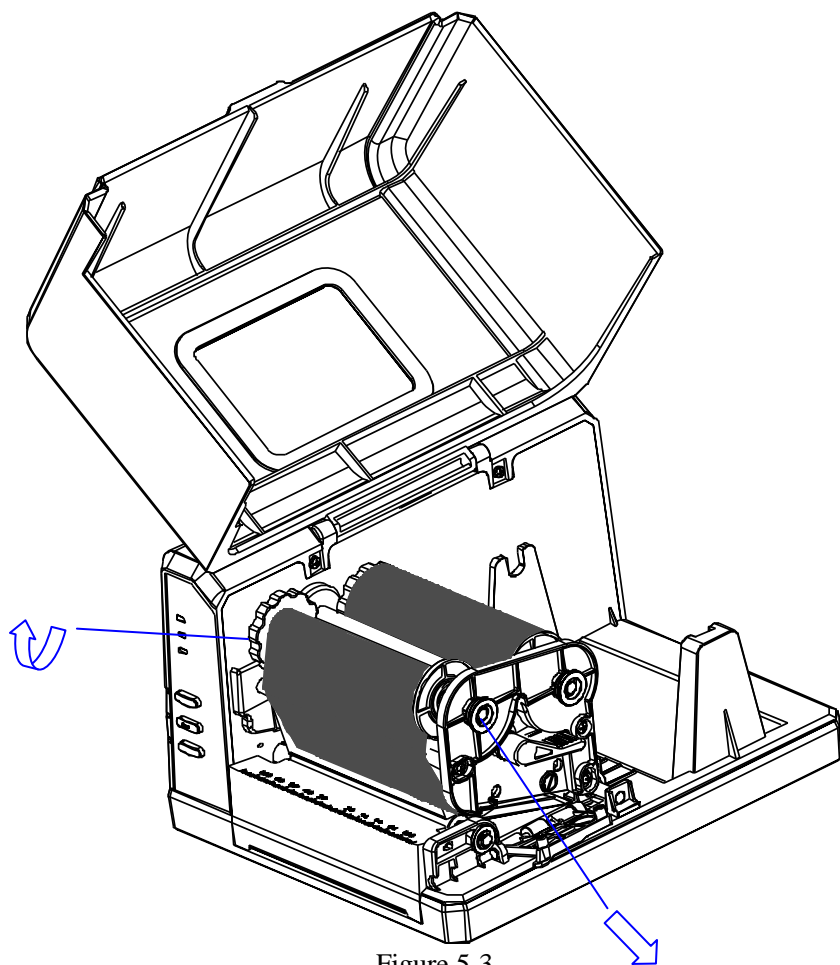


Figure 5-3

Loading the Media

Q8 printers can be operated in three different modes: Standard mode, Peel-off mode, and Cutting mode.

- In Standard mode, each printed label remains on the backing liner.
- In Peel-off mode, each printed label is peeled away from the backing liner automatically.
- In Cutting mode, the printer automatically cuts the label after it is printed.

Note: Peel-off requires an optional Peeler Kit to be installed. Cutting mode requires an optional Guillotine Cutter to be installed.

Standard Mode

To load media into the Q8 while using Standard Mode:

1. Lift the top cover to expose the Media Compartment.
2. Take out the Media Spindle (see Figure 6-1).
3. Load a Media Roll, with labels facing up, onto the Media Spindle, using the scale on the Media Spindle to position the Media Roll in the middle of the Spindle.
4. Next, insert the two Media Roll Guides, with their smooth sides facing inwards towards the Media Roll, on each side of the Roll on the Media Spindle. Push the two Media Roll Guides close to Media Roll (see Figure 6-2).
5. Insert the entire unit into the printer's Media Compartment.
6. Turn the Handle to the "open" position to open the Printhead module.
7. Route the labels under and pass the Media Guide Rod, and over and pass the Platen Roller to the front of the printer.
8. Slide the Media Guides to the edge of the media; don't squeeze the labels, make sure they remain flat (see Figure 6-3).
9. Turn the Handle to the "close" position.

10. Close the cover and press the “FEED” button to feed the Media and ensure proper tracking. If the printer does not correctly sense the top of each label, it may be necessary to perform the Media Calibration (see Operations).

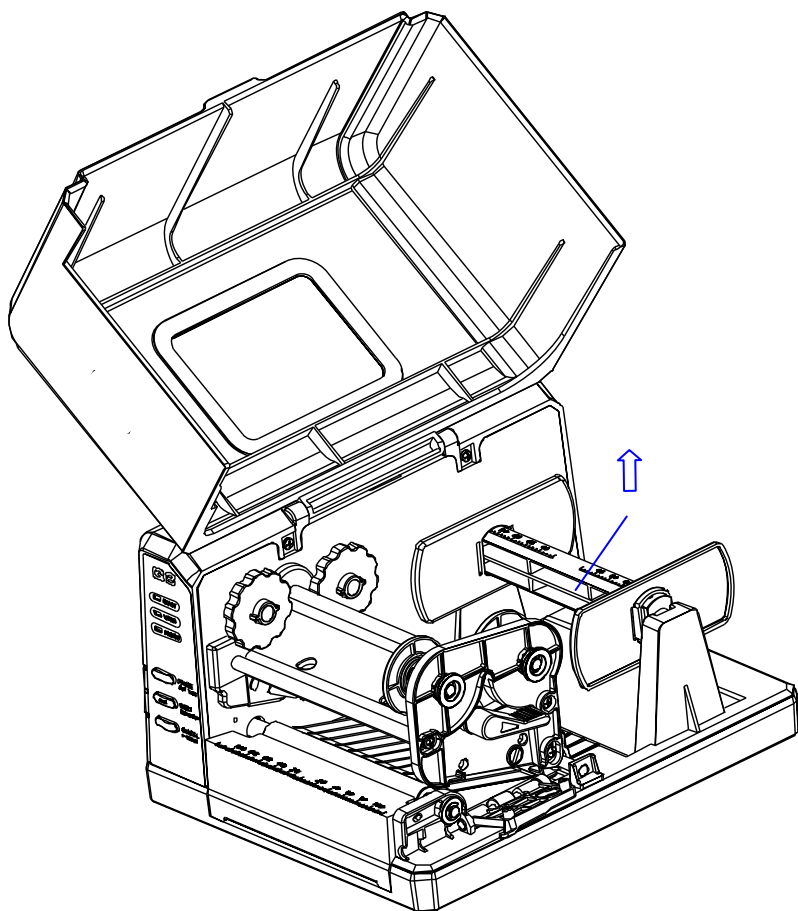


Figure 6-1

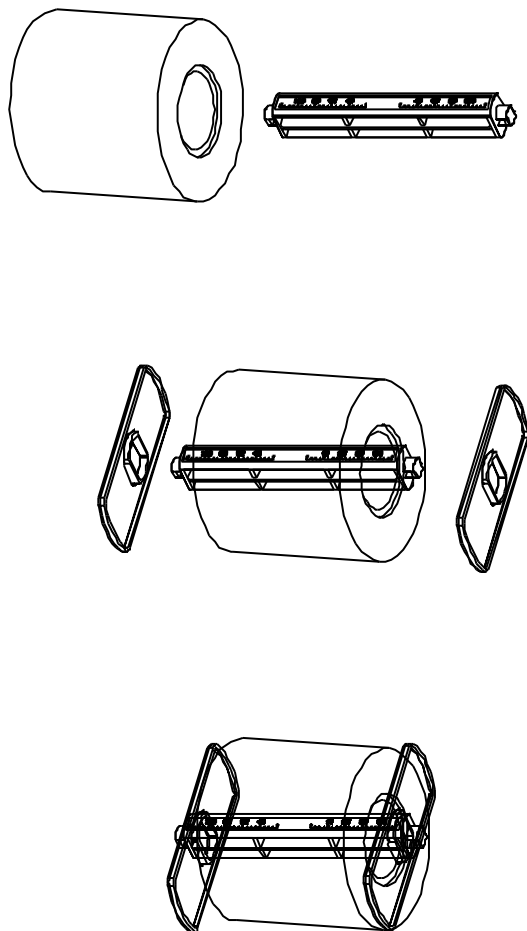


Figure 6-2

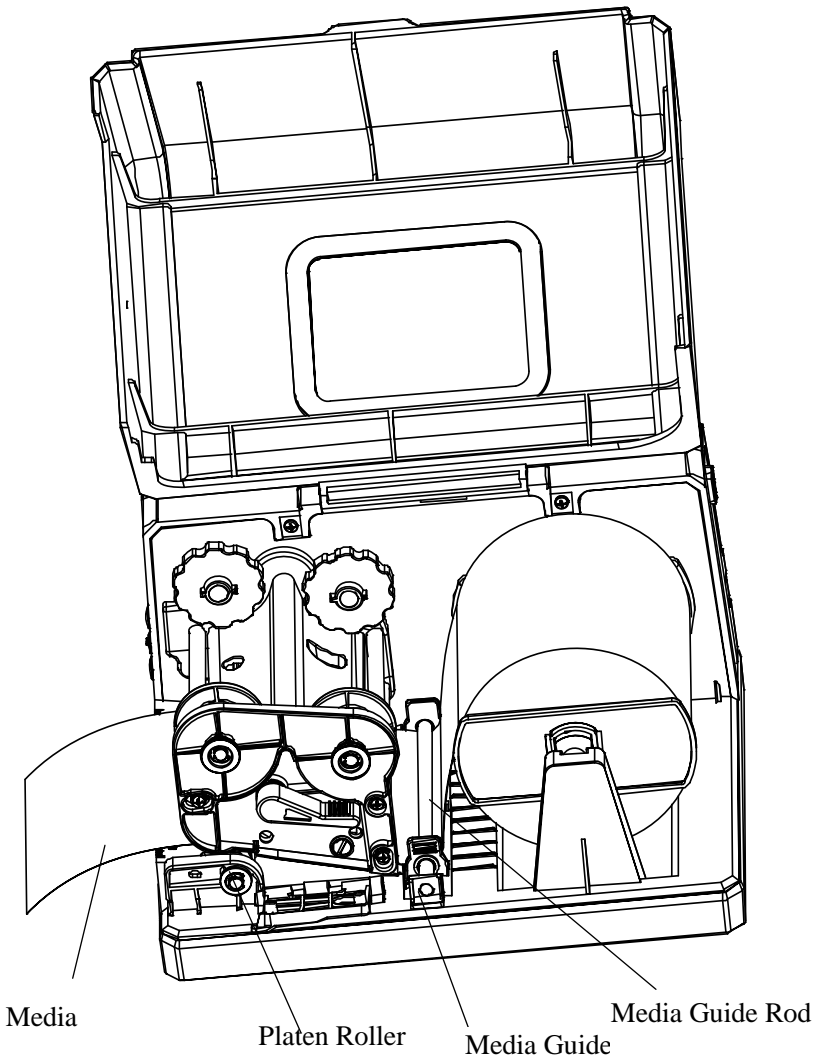


Figure 6-3

Cutting Mode

1. Set the 3rd DIP Switch to ON to enable the cutter function (see Figure 6-4).
2. Turn on the printer.
3. Reset the Cutter: Press and hold the “Cancel” button for 4 seconds, the three lamps will blink simultaneously. Release and press the “Cancel” button again, the Cutter is ready to use (see Figure 6-4).
4. Turn the Handle to the “open” position, and flip down the Printhead Module Plate. Lead the labels through the Cutter, then close the Printhead Module Plate, and turn the Handle to the “close” position. Media roll is loaded (see Figure 6-5).
5. Remarks: It is a must to reset the cutter before loading media, or else, the wrong location of cutter blade will cause label fail to go through the cutter.

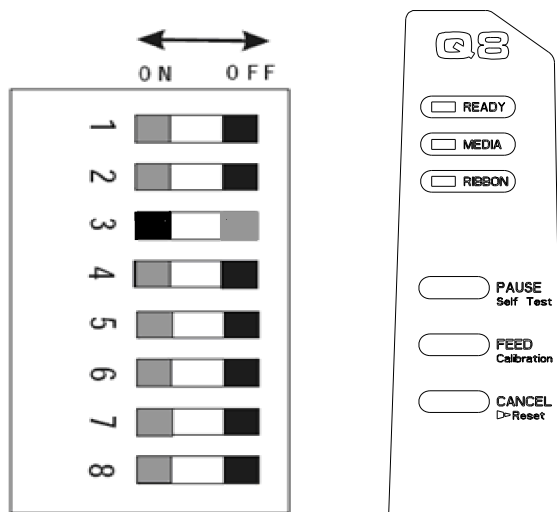


Figure 6-4

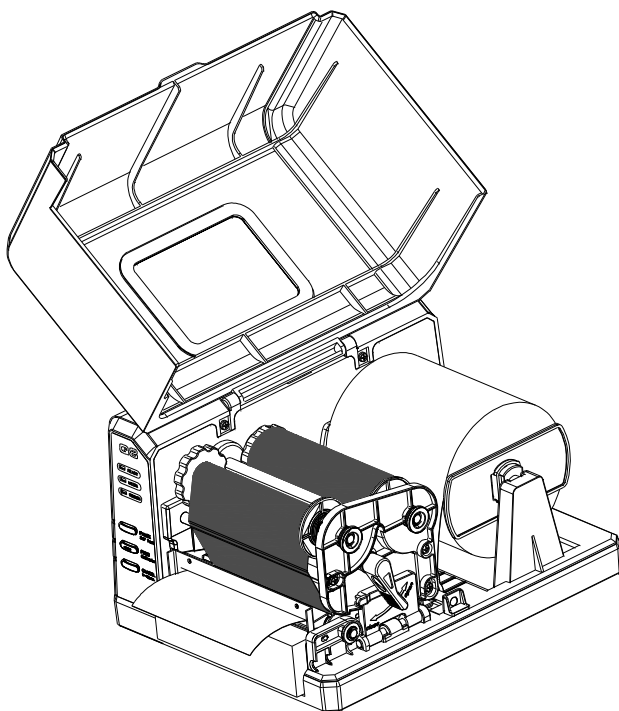


Figure 6-5

Adjusting the Position of Media Sensor

1. Lift the top cover (see Figure 7-1).
2. Turn the Handle to the “open” position, take out the Media Sensor Cover to expose the Media Sensor (Figure 7-2).
3. Check the location of Media Sensor (see Figures 7-3, 7-4 and 7-5).
4. Remove the media sensor cover, remove the screw, adjust the media sensor to the appropriate position, then fix the screw back (Figure 7-7)
5. Put back the media sensor cover.

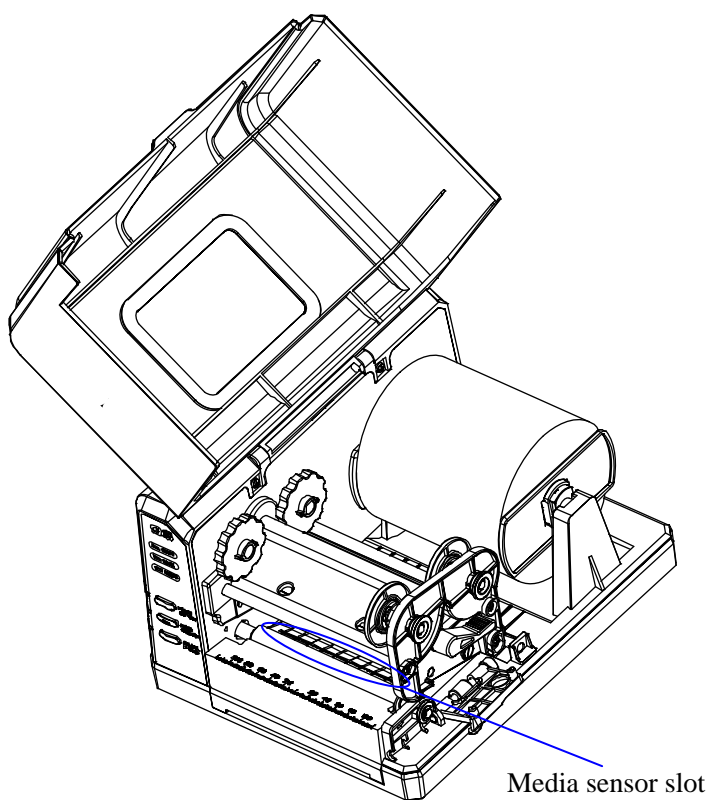


Figure 7-1

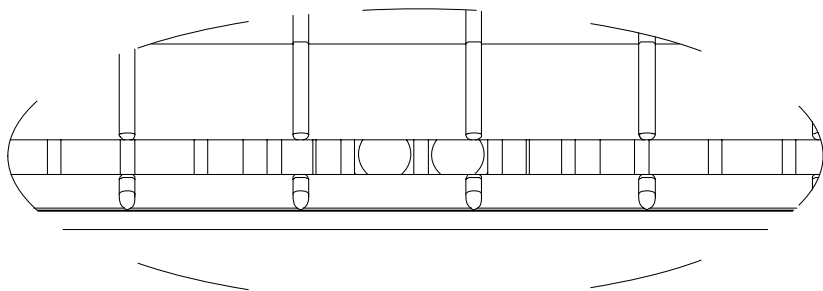


Figure 7-2

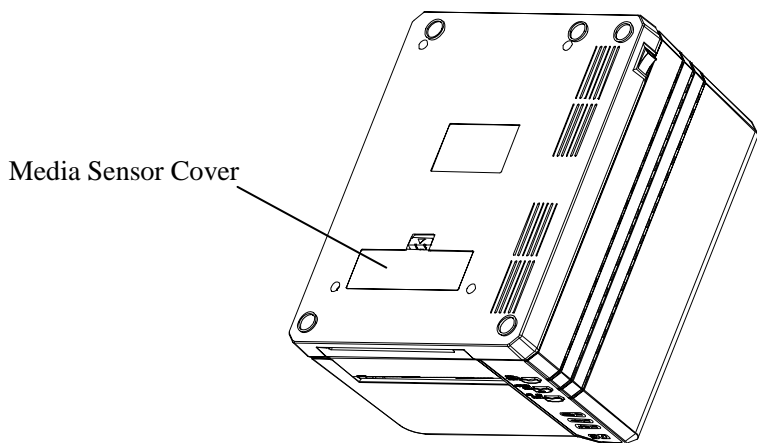


Figure 7-6

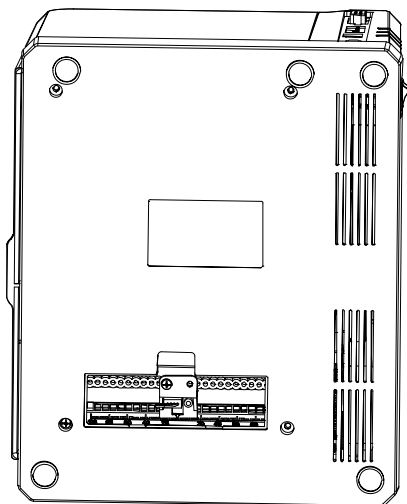


Figure 7-7

Chapter 3: Operations and Settings

Basic Operations

Power Switch

The power switch is on the back panel of the printer. The symbols on the switch are defined as follows:

— —ON

○ —OFF

The Front Panel

The Front Panel of the Q8 printer consists of:

- Three Indicator Lamps: MEDIA, READY and RIBBON
- Three multi function buttons: PAUSE, FEED and CANCEL

Indicator Lamps

The three lamps indicate the status of the printer (please refer to Chapter 4: Troubleshooting, for error indicators).

READY

- **Solid:** Indicates the printer is in the normal state;
- **Blinking:** Indicates the printer is in the 'PAUSE' state.

MEDIA

- **Solid:** Indicates the printer is in the normal state;
- **Blinking simultaneously with READY:** Running out of media;

RIBBON

- **Solid:** Indicates thermal transfer printing;
- **Off:** Direct thermal printing (no ribbon installed);
- **Blinking simultaneously with READY:** Running out of ribbon.

Buttons

The three buttons have different functions based on the mode of the operation is performed.

Mode	Basic Functions	Advanced Functions See Advanced Operations below
Feed/Calibration	Feeds one label	Media Sensor Calibration
Pause/Self Test	<ul style="list-style-type: none">- Press once to pause current print job- Press a second time to resume printing	Self-test: The Printer performs a self-test and prints out a configuration report
Cancel/Reset	<ul style="list-style-type: none">- Cancel current batch of labels- Forces the printer to continue working after an error has been corrected	Reset: Resets the printer to Factory Default Settings

Advanced Operations

Media Sensor Calibration

It is necessary to perform a Media Sensor Calibration after each new roll of media is installed.

1. Press and hold the Feed/Calibration button for about 2 seconds.
2. The printer will feed several labels.
3. The three indicator lamps will stop blinking and remain lit; the printer is back to a normal state.

Self Test

1. Press and hold the Pause/Self Test button for about 2 seconds;
2. The printer will print out a configuration report and the three indicator lamps will stop blinking and remain lit. The printer is back to a normal state.

3. The following information will be printed on the self-test report:
 - Font list
 - Hardware configuration and status
 - Label parameters
 - Firmware version
 - Direct Thermal or Thermal Transfer printing method

Reset to Factory Default Settings

To reset the printer to factory default settings:

1. Press and hold the Cancel/▶-Reset button for 2 seconds, the three lamps will blink simultaneously (the printer will return to normal state automatically if no operations are performed within 4 seconds);
2. Release and press the Cancel/▶-Reset button again;
3. The three indicators stop blinking and remain lit. The printer is now in its normal state.

Note: The printed label count and printed length may not be reset.

DIP Switch Panel

The DIP Switch panel is located on the back of the printer.



Note: Turn off the printer before setting DIP switches.

DIP Bit	Functions	Remarks
1	ON: Direct thermal print OFF: Thermal transfer print	Printing type setting Default: OFF
2	ON: Tear off position OFF: Edge of next label	Stop position setting Default: OFF
3	ON: Cutter is installed OFF: Cutter is not installed	Cutter setting Default: OFF
4	ON: Peeler is installed OFF: Peeler is not installed	Peeler settings Default: OFF
5	Reserved and not available	
6	ON: Enable IP setting OFF: Disable IP setting	IP address setup Default: OFF
7	$\frac{8}{0} \frac{7}{0} - 9600, n, 8, 1$	RS232 Serial Port baud rate setting

8	0 1 – 19200,n,8,1 1 0 – 38400,n,8,1 1 1 – 57600,n,8,1	0: OFF, 1: ON Default: 00
---	---	------------------------------

Windows Driver and Bartender-Postek Software

The Q8 printer is compatible with the following operating systems:

Windows 7

Windows Vista

Windows XP

Windows 9X

Windows Me

Windows 2000

Windows 2003

Windows 8

Additionally, the Q8 printer comes with powerful bar code software, Poslabel.

Both the Windows driver and Poslabel are available on the CD-ROM shipped with the product. Software upgrades are available for download from:

www.ecline.com.mx or,

www.ecline.com.hk

Note: Prior to uploading a new driver or installing an updated driver, remove any old version of the driver that may be stored in your computer.

Chapter 4: Maintenance

Warnings

1. **Make sure the printer is turned OFF before performing any maintenance operations.**
2. **The printhead becomes hot while printing, be careful when performing maintenance on the printhead.**
3. **Use only the cleaning agents indicated. EC Printer Electronics Co., Ltd. will not be responsible for damage caused by any other cleaning materials used on the printer.**
4. **Anhydrous isopropyl alcohol is a solvent containing no more than one percent water. Isopropyl alcohol is a flammable solvent; always take the proper precautions when using this solvent.**

Cleaning the Printhead

The Printhead is the mechanism that enables the ink to impact the label. Due to the Printheads precision construction and necessary location in the printer, it comes into contact with consumables and therefore is susceptible to dirt accumulation. If dirt is not removed, the Printhead may be damaged. To ensure longevity of the Printhead, follow the recommended maintenance guidelines below:

Note: A Printhead damaged by misuse is not covered under warranty.

Clean the Printhead after every (1) roll of ribbon use or every (3) rolls of label media use. To clean the Printhead:

1. Turn printer power off
2. Open the top cover of Q8 printer
3. Turn the handle to open.
4. Remove the ribbon (if applicable) and media
5. Use a cotton swab dipped in anhydrous isopropyl alcohol. Rub the swab along the Printhead until the swab no longer

accumulates ink

6. Let the Printhead dry before using the Q8 again

Cleaning the Platen Roller

The Platen Roller, located at the exit point and underneath labels, supports the labels as they feed out of the printer. The roller can accumulate debris from consumables, such as dirt, sand, dust or glue. To ensure longevity of the Platen Roller, follow the recommended maintenance guidelines below:

Clean the Platen Roller after every (3) rolls of label media used. To clean the Platen Roller:

1. Turn off the printer.
2. Open the top cover.
3. Remove the ribbon (if applicable) and media.
4. Use a cotton swab dipped in anhydrous isopropyl alcohol. Rub the swab along the Platen Roller while rotating the roller until the swab no longer accumulates ink or debris.

Cleaning the Printer Interior

Over time, the printer's interior may collect dust or debris from the consumables. It is advised to periodically clean the printer's interior in order to prevent the accumulated debris from damaging internal parts.

To clean the printer interior, use a cotton swabs dipped into anhydrous isopropyl alcohol and remove any debris.

Chapter 5: Troubleshooting

Error Indicators

Typically, when the printer is not functioning, the READY lamp on the front panel will begin blinking, the communication between printer and the host would be interrupted, and the printer would stop working. Please check the LED indicators on the front panel to detect the malfunction.

READY and MEDIA Lamps blink simultaneously

Possible Cause	Recommended Solutions
Media sensor cannot detect labels	(1) Check and confirm the media has been loaded correctly (2) Check the position of the media sensor and confirm it could detect the media gap or black line (3) Calibrate the media sensor
Media ran out	(4) Load a roll of media
Media jammed	(5) Clear the jam
The Media Roll Guides are not firmly positioned against the Media or have not been installed.	(6) Install the Media Roll Guides correctly as shown in Figure 6-2.
Media sensor is broken	(7) Contact an authorized EC PRINTER service provider for technical support.

Note: If you are using continuous media without gaps or black lines, please make sure the correct Media Type settings are input in Bartender-Postek software.

READY and RIBBON Lamps blink simultaneously:

Possible Cause	Recommend Solutions
Ribbon ran out	Load a new roll of ribbon
Ribbon jammed	Clear the jam
Ribbon Sensor error	Contact an authorized EC PRINTER service provider for technical support.

Only READY Lamp blinks:

Possible Cause	Recommend Solutions
Serial I/O error	Check DIP switches for the baud rate settings
Memory overflow	a. Restart the printer b. Reset the printer

Miscellaneous

Vertical Blank Lines Appear

If the printer prints vertical blank lines as shown in the below picture, it may be due to a dirty or defective Printhead. See the table below for possible causes and solutions.



Cause	Corrective Action
The Printhead is dirty.	Clean the Printhead. Follow the recommended maintenance guidelines for cleaning the Printhead.
Vertical lines still appear after cleaning the Printhead.	Contact an authorized EC PRINTER service provider for technical support.

Printer Timeout Error Message

Execute following corrective actions:

1. Check the interface cable for proper connection.
2. Ensure the Q8 printer is powered on.

If the trouble still exists, please contact an authorized EC PRINTER service provider for technical support.

Data Sent but Not Printing

1. Ensure the correct driver is chosen in the label software.
2. Reset the Q8 printer.

If the trouble still exists, please contact an authorized EC PRINTER service provider for technical support.

Poor Printing Quality

When experiencing poor print quality, check the following:

1. Adjust print darkness setting value.
2. Adjust print speed setting value.
3. Clean the Printhead and the platen roller.
4. Poor quality printing may be caused from using a low quality ribbon.
Change to higher quality ribbon.
5. Poor quality printing may be caused from using low quality media.
Change to higher quality media.

Recovery

After the miscellaneous has been cleared, press the CANCEL button to clear the alarm or restart the printer to resume the printing automatically.

Note: For errors not listed here, please contact an authorized EC PRINTER Service Provider for further assistance.

Appendix A: IO Interface Specifications

RS232 Serial Interface

The RS232 connector on the printer is a DB9F:

Pin	Direction	Definition
1	/	/
2	Out	TX
3	In	RX
4	In	CTS
5	-	Ground
6	Out	RTS
7	In	DSR
8	Out	DTR
9	/	/

Connection with the Host:

Host 25S		Printer 9S		Host 9S		Printer 9S
TX 2	3 RX		RX 2	2 TX
RX 3	2 TX		TX 3	3 RX
DSR 6	8 DTR		DTR 4	7 DSR
DTR 20	7 DSR		DSR 6	8 DTR
RTS 4	4 CTS		RTS 7	4 CTS
CTS 5	6 RTS		CTS 8	6 RTS
GND 7	5 GND		GND 5	5 GND

Alternately, you can connect the 3 wires.

Host 25S		Printer 9S		Host 9S		Printer 9S
TX 2	3 RX		RX 2	2 TX
RX 3	2 TX		TX 3	3 RX
GND 7	5 GND		GND 5	5 GND
pin 4	—			pin 4	—	
pin 5	—			pin 6	—	
pin 6	—			pin 7	—	
pin 20	—			pin 8	—	

Baud rate: 9600, 19200, 38400, 57600 (Baud Rate set by DIP switches 7–8)

Data format: always 8 data bits, 1 start bit and 1 stop bit.

Parity: always non parity.

Flow control: RTS/CTS (Hardware flow control).

If using software or drivers under the Windows environment, the flow control must be set to “hardware”

Any communications port can transmit data from the host (RS232 and USB). Preliminary communications settings are not required since the printer will automatically detect which port is active. Never send data from 2 ports at the same time. Data cannot be sent to more than one port simultaneously, otherwise, data corruption and print errors may occur.

Appendix B: ASCII Table

	0	1	2	3	4	5	6	7
0	NUL			0	@	P	`	p
1	SOH	XON	!	1	A	Q	a	q
2	STX		“	2	B	R	b	r
3		XOFF	#	3	C	S	c	s
4			\$	4	D	T	d	t
5		NAK	%	5	E	U	e	u
6	ACK		&	6	F	V	f	v
7	BEL		‘	7	G	W	g	w
8	BS		(8	H	X	h	x
9)	9	I	Y	i	y
A	LF		*	:	J	Z	j	z
B		ESC	+	;	K	[k	{
C	FF		,	<	L	\	l	
D	CR		-	=	M]	m	}
E	SO	RS	.	>	N	^	n	~
F	SI	US	/	?	O	_	o	DEL

Remark: The € sign is included in the embedded table at DEC128 (HEX 80).

Please visit our web-site for more EC Line product information

www.ecline.com.mx

www.ecline.com.hk